

# A Global Leader In The World's Toughest Applications

RMI products are used in some of the worlds toughest applications such as pressure testing, descaling and cleaning systems to hydraulic pressure control systems for presses and power systems or longwall coal mining.

Our high-pressure systems are precision-engineered and manufactured with robust materials to withstand the rigours of heavy industry, and perform reliably in challenging, often hazardous environments.

## Industry Applications

RMI high pressure systems have been supplied across multiple industry applications for many decades.

Designed to perform in hazardous environments, to increase productivity, while reducing energy consumption. RMI provide water hydraulic solutions for OEMs and end-users.

- Descaling
- Forging
- Extrusion
- Rolling
- Hydrostatics
- Power generation
- Industrial cleaning and filtration

All RMI equipment is designed, manufactured and supplied in accordance with BS EN 9001 quality assurance and BS EN 14001 environmental management standard. Our products also meet and exceed any industry specific standards and accreditations.



## Longwall Coal Mining

For over 100 years, RMI has been regarded as a preferred supplier for longwall coal mining communities around the world. We understand the extreme challenges of mining and our modular pump design enables us to manufacture customised systems for:

- Hydraulic roof supports
- Dust suppression
- Cooling

For more information, contact your RMI representative or visit us at: [www.rmipsl.com](http://www.rmipsl.com)

**ALABAMA**  
6599 OLD BIRMINGHAM HIGHWAY  
JASPER, ALABAMA  
35501-8216  
UNITED STATES  
+1 (205) 483 0350

**BEIJING**  
ROOM A050  
10TH FLOOR OF NEXUS CENTER  
NO. 19 OF EAST THIRD RING RD  
CHAOYANG DISTRICT, BEIJING  
CHINA  
+86 21 3756 6696

**GUJARAT**  
MAHADEV FALIYA  
DANTESHWAR  
PRATAPNAGAR ROAD  
VADODARA  
GUJARAT, INDIA  
+91(0) 85058 95050

**MANCHESTER**  
WOLVERTON STREET  
MANCHESTER  
UNITED KINGDOM  
M11 2ET  
+44 (0) 8444 145 145

**CARDIFF N.S.W**  
40 ARUMA PLACE  
CARDIFF  
NEW SOUTH WALES 2285  
AUSTRALIA  
+61 (02) 4954 0163

**SHANGHAI**  
1619 HUNGANG RD  
XIDU TOWNSHIP  
SHANGHAI, 201401  
CHINA  
+86-21-3756-6696



## High-Pressure Reciprocating Systems



### BROCHURE

File No: 100.1 ENG  
Date: October 2019  
Revision: 1

## High-Pressure Reciprocating Systems For Longwall Coal Mining And Industry.



HIGHEST  
ENERGY EFFICIENCY



LOWEST  
INSTALLED COST



HIGHEST  
OPERATING  
PERFORMANCE



LOWEST  
OPERATING COST



LOWEST  
PROJECT &  
OPERATING RISK



LOWEST  
ENVIRONMENTAL COST

### Productivity By Design

RMI Pressure System (a member of Armstrong Fluid Technology) is a global leader with an enviable reputation for high-pressure and high-volume fluid pumping stations for industrial and longwall mining markets.

After over 100 years of business our research and design engineering practices are honed for the diverse and extreme environments our products are exposed to.

Our extensive knowledge of complete systems and pump operating cycles help us to continue to develop innovative solutions that utilise the very latest technologies to enhance performance, reliability, availability and safety.

### Designed For Optimum Performance

RMI's intelligent variable speed pumps operate at the highest possible energy efficiency to reduce cost, waste and environmental emissions the addition of our active performance management software, ensure they maintain peak performance throughout their operation.

### Designed For The Ultimate Reliability And Availability

RMI pumps have been designed with optimised maintenance in mind. Our modules and kits enable faster upgrades to maximise uptime availability while reducing spare stock holding.

### Support Designed For Complete Peace Of Mind

With operations in the UK, USA, India, China and Australia our customers benefit from local specialist service support. Our highly skilled service engineers provide complete peace of mind and are ready to visit site whenever needed to provide routine maintenance, repairs, upgrades and training.



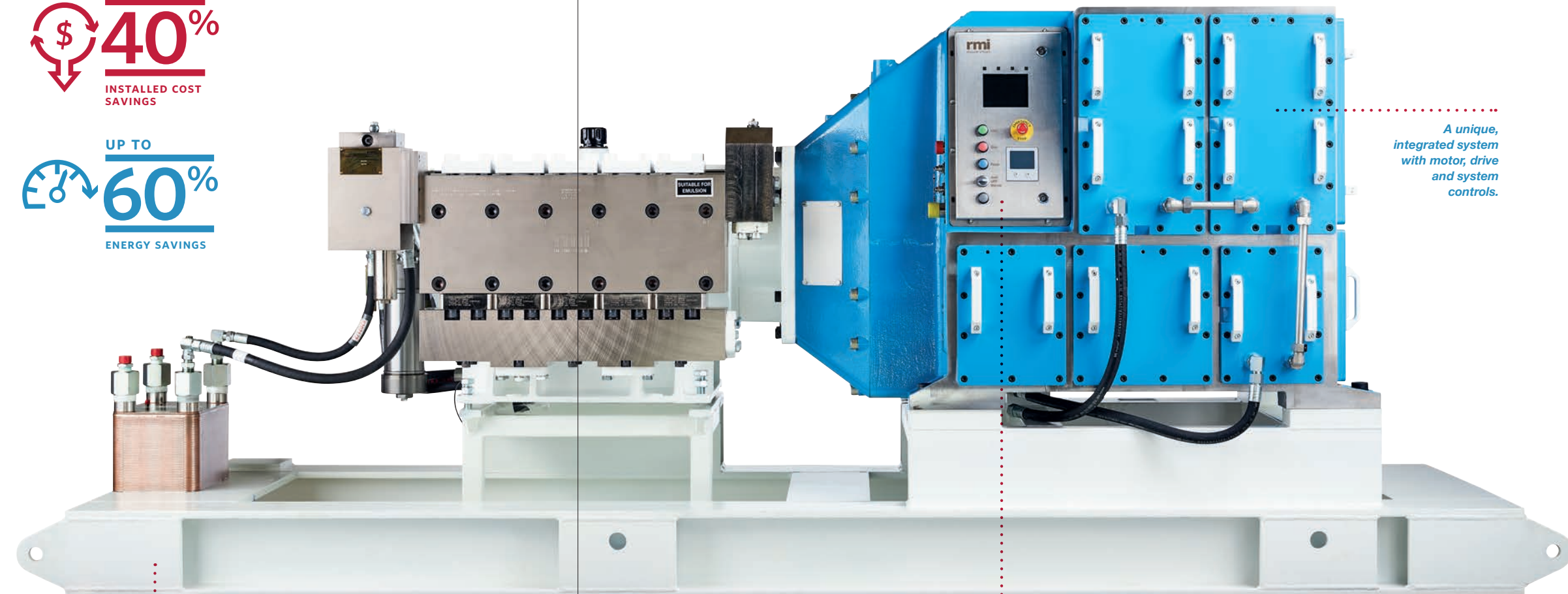
Our latest innovation AGILIS, is the world's first only fully integrated system designed to increase the productivity of coal mining. Using the latest industry leading technology, AGILIS achieves unrivalled performance capability and efficiency that delivers enhanced value and profit at the lowest installed cost.

With ODIN, predictive algorithms and SCADA, AGILIS performs beyond any other product in the market to deliver optimal performance.

Its modular plug and play design also minimises installation cost and enables quick and simple upgrades to be carried out.

UP TO  
**40%**  
INSTALLED COST SAVINGS

UP TO  
**60%**  
ENERGY SAVINGS



A unique, integrated system with motor, drive and system controls.

25% smaller.

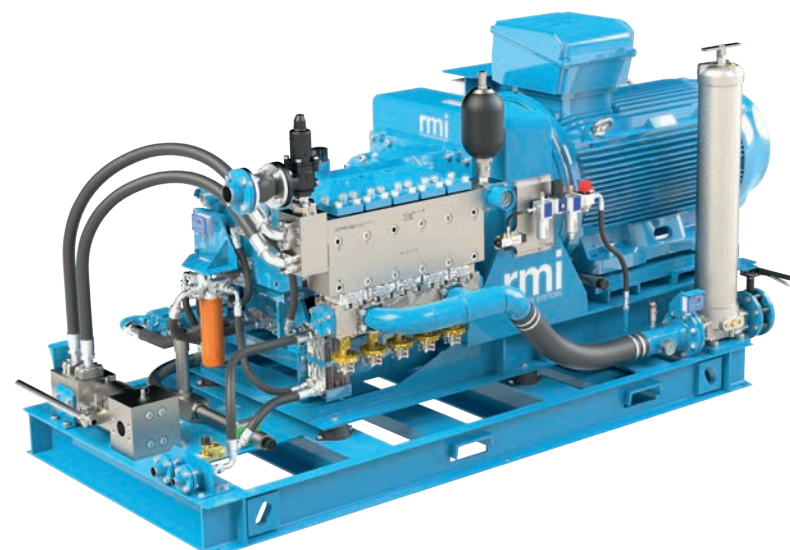
Space-saving design helps improve safe working conditions, and lower costs via reduced cabling, and train size.

Plug and play design, simplifies maintenance and control operation, allowing easy on-site replacement or repair of the modular controls, saving time, and costs.

### S Series Pumps

The "S" range of plunger pumps are synonymous with quality in the industry and consists of the Trimax range 3 plunger pumps and the Quinmax range 5 plunger pumps.

- Solid ceramic or tungsten carbide coated plungers are combined with kevlar fibre seals to provide durable, high-pressure sealing.
- Pumps undergo rigorous in-house testing, including oil temperature and pressure checks, in conjunction with standard pump performance criteria.



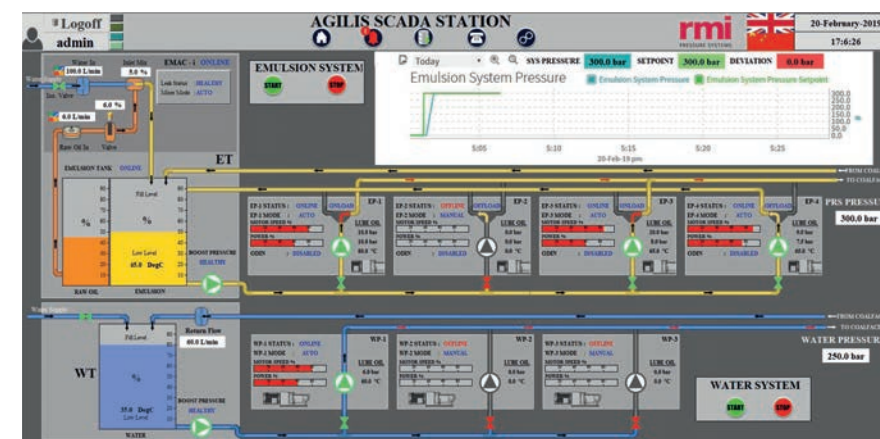
### Quinmax S500

The Quinmax S500 pump, 5 cylinder design pump has the following benefits over a 3 cylinder design pump:

- Enhanced flow rate (up to 878 l/min).
- Reduced crankshaft and bearing loads leading to longer life and time in between service intervals.
- A 40% reduction in the fluid velocity per plunger resulting lower hydraulic noise.
- Slower crank speeds reducing mechanical wear and noise.
- Smoother pressure profile reducing the impact of surges on other critical items of equipment within the system.

These features attribute to greater reliability and available uptime of the pumps and components within the system.

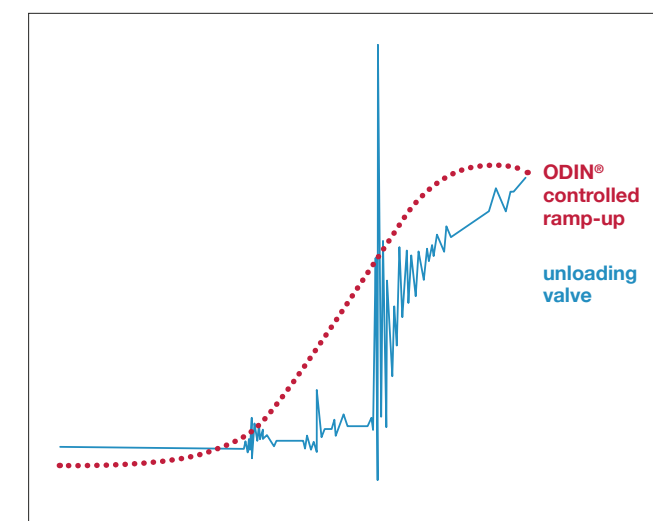
## Active Performance Management Solutions



### Active Performance Management

Real time data is captured by SCADA to monitor the operational health of the system. Online connectivity ensures that system performance changes are detected early and corrective action advised, lowering maintenance costs and increasing availability while maintaining efficiency, effectively reducing project risk.

Active Performance Management ensures long-term efficiency of a mechanical system through flow: the informed, data-driven responses to changes in load and system performance.



### ODIN® Intelligent Control For Profitable Mining Systems

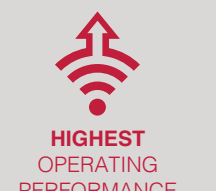
ODIN® is a globally patented technology, which calculates the required demand for hydraulic fluid. Using ODIN® technology, a rapid response is triggered, even reacting "in-advance" to the anticipated movement of the hydraulic roof supports, by automatically calculating flow requirements, and preventing pressure drops at the coal face. This increases the productivity of the mine, and profitability.

ODIN®.THE SMART CONTROL SYSTEM

## System Upgrades And Servicing



HIGHEST  
AVAILABILITY & UPTIME



HIGHEST  
OPERATING  
PERFORMANCE



LOWEST  
OPERATING COST



REDUCED  
OPERATING RISK

RMI modules and kits are specifically designed to help you to keep your pump running at optimum performance for longer and to maximise available uptime.

### One Stop Maintenance For Maximised Uptime

Our range of kits have been designed to ensure our pump mechanisms can quickly and easily be replaced, upgrading all key components at the same time, reducing the need for repeat maintenance strip downs and maximising valuable uptime.

### Latest Specification Upgrades

As a market leading innovative engineering company, RMI constantly improves the quality, reliability and performance of our products by utilising state-of-the-art design, materials and technology.

All of our maintenance kits contain the latest components of the highest specification to give you complete peace of mind that when you overhaul your pump, you'll be doing much more than replacing like for like. You will upgrade your pump, increasing reliability and performance to today's high performance standards.

### Reduced Spares Stock Holding

The convenience of maintenance kits means the right set of components are on hand, reducing potential delivery delays and significantly reducing your spare part inventory holding.

### Service Solutions

RMI also offer a comprehensive package of service support solutions, to suit your specific site needs including:

- On-Site Set-up and commissioning
- On/Off Site training
- Routine health checks and monitoring
- Scheduled upgrades and repairs
- Emergency on-site repairs
- Full equipment upgrade advice



### Service Benefits

- Tailored service solutions to suit individual site needs and budget
- Original manufacturer service and support
- Highly skilled, expert technical service engineers
- Scheduled predictive maintenance to maximise system reliability and uptime
- Guaranteed response times
- Detailed reports, quotations and schedules of work
- Genuine, latest generation RMI spare parts